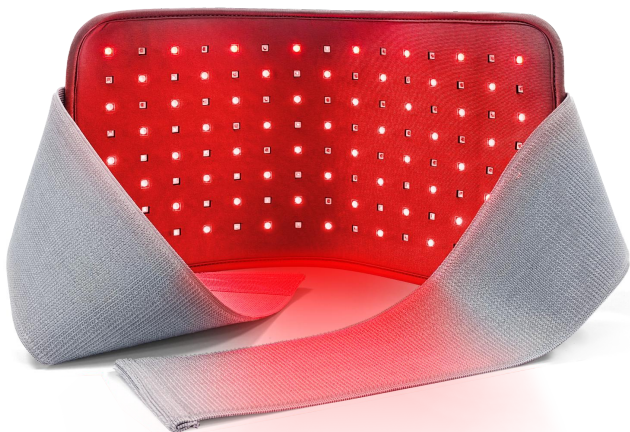




**PHOTON 4 HEALTH**  
NEXT LEVEL LIGHT THERAPY

## **ENGLISH USER MANUAL**



**BRAINHEALER<sup>®</sup>**  
**GUTBRAIN**

## ► INTRODUCTION

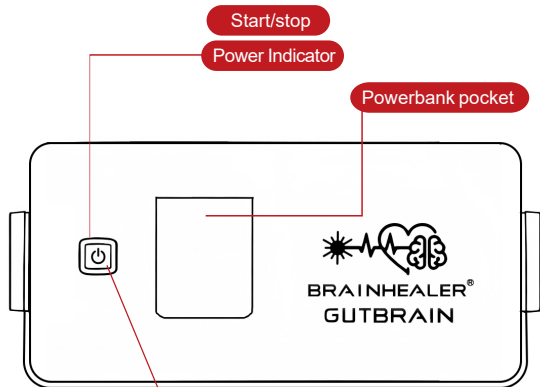
Thank you for purchasing the BRAINHEALER® GUTBRAIN biophoton therapy device. This device is based on 12 years of our personal experience with over 10,000 users. We are delighted that you are part of this new generation of lightweight biophoton therapy devices, including the BRAINHEALER® GUTBRAIN and the BRAINHEALER® BASIC. The light wavelengths used by PHOTON 4 HEALTH® are scientifically proven effective, and the device is equipped with a patented frequency modulation program that optimizes your gutbrain. Please read this manual carefully before using this product to achieve the best results.

### NOTICE

*For best results, power your BRAINHEALER GUTBRAIN (and possibly your BRAINHEALER BASIC) only with the BRAINHEALER power bank.*



## ▶ PRODUCT DIAGRAM



Red Light

Infrared Light

*Note: Infrared light is invisible to the naked eye.*

## WHAT'S INCLUDED



• Belt x 1



• Powerbank  
+ charger



• User manual x 1



• TYPE-C cable x 1



• Aluminum suitcase



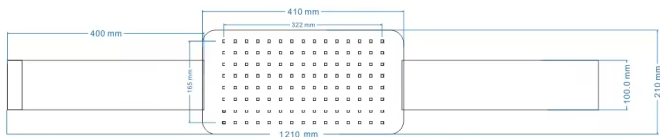
### STANDBY MODE

If the Mode light is green you know that the BRAINHEALER GUTBRAIN is receiving power but no program is active.



### TREATING

Press once and the Mode light turns blue. When the light is blue, the 30-minute patented BRAINHEALER GUTBRAIN program is active.

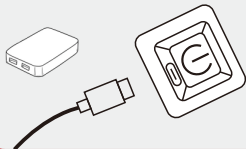


The patented BRAINHEALER® GUTBRAIN program consists of bioresonance frequencies that positively influence your overall well-being and self-healing capacity. All of this is delivered through red/infrared LEDs and infrared patented biophoton lasers, which increase the body's biophoton reserves and thus improve your cell communication. Unfortunately, we cannot make any medical claims about the health benefits of this. However, if you use the BRAINHEALER daily, we are convinced that you will soon experience the miraculous effects yourself and be able to share them with your loved ones.

## ▶ HOW TO USE

1

Insert USB cable to the powerbank and connect to the power switch on the belt

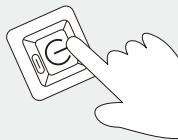
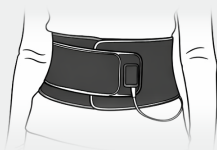


2

When the light is green, it means the BRAINHEALER® GUTBRAIN is receiving power. If the light is not green, first press the button on the power bank to turn it on. Then, press the green button on the Brainhealer to start the BRAINHEALER® GUTBRAIN program (30 minutes). The light will then turn blue.

3

Place the BRAINHEALER® GUTBRAIN on your bare skin



4

If you also have a regular BRAINHEALER you can turn it on at the same time ;-)



5

When the program is complete, the light will turn green again. If you do nothing, the power bank will turn off after 1 minute.

## ▶ THE FEATURES AND BENEFITS

Brain and gutbrain health is a long-term process that requires your attention and investment. It takes time and daily use. Hundreds of clinical studies have proven that biophoton therapy positively impacts brain and gutbrain health, overall health, and self-healing capacity. We believe your body benefits from every use. However, many factors can influence the speed at which your symptoms improve. Generally, it can take up to four weeks for health issues to improve, provided you use the product daily. By using the product consistently every day, you can maximize the activity of your self-healing capacity.



*If you have questions about specific conditions, we recommend consulting a trusted healthcare provider or physician or contacting us directly for a free consultation.*

## Product Specifications

Product brand: PHOTON 4 HEALTH® BRAINHEALER® model name: GUTBRAIN

Led Qty : 112pcs (dual chips, 56pcs 630nm chips+56pcs 1070nm chips)

Laser Qty: 64 pcs (48pcs 785nm, 4pcs 850nm, 4pcs 1070nm, 4pcs 665nm)

Timer : 30 minutes

Material : Lycra

Size : 41 \* 21 cm

Weight : 150 g

Power : Type-c 5V-2A

Powerbank Capacity : 20.000mAh,  
(6 hours of treatment on one charge)

## ▶ WARNING

- \* This product should never get wet.
- \* Cleaning may only be done with a dry cloth.
- \* Do not stand on the device
- \* Do not use the device when cords or plugs are damaged.
- \* Do not use the device if it is damaged or comes in contact with water.
- \* Do not carry or lift up the device by the power cord.
- \* Do not use the device near hot surfaces or environment.
- \* Do not place heavy objects on the device.
- \* Store the device with the aluminum suitcase to avoid any kind of damage.

**1** Keep the product and its components out of reach of children.

**2** do not use this device if you have had an organ transplant.

## ► WARRANTY

This product comes with a free 3-year warranty and lifetime maintenance service. If you experience any issues with your product (not caused by human intervention) within 3 years of purchase, please contact us. We'll be happy to help. Please note: This warranty does not cover damage to this product resulting from accident, abuse, misuse, or failure to follow the instructions.

**For more information about our products, please visit [www.photon4health.com](http://www.photon4health.com) or email [info@photon4health.com](mailto:info@photon4health.com)**

This device is manufactured in Europe by  
PHOTON 4 HEALTH B.V.  
Zwartewaterallee 56  
8031 DX Zwolle  
the Netherlands

